



DEPARTMENT F

SHEEP



DALE HEIDEMANN (815) 465-6749
LARRY NELSON (815) 567-3429
Co-Superintendents

Entries Close Monday, August 5, 2019 - 5:00 p.m.

Estimated Amount Offered \$12,282.00

Judging Time - 9:00 a.m. Friday, August 23, 2019

Entry Fee - \$6.50 per entry

Pen Rent - \$2.00 per head for the duration of the Fair.

Entry and pen fees must be paid at the time entry is made.

All animals must be property of exhibitor for 30 days prior to opening of Fair. Partnerships not accepted.

See 2019 State Exhibition Livestock Health Requirements.

Registration papers are required for all purebred livestock and must be made available for inspection by Directors in charge and remain in exhibitors possession for duration of fair. Animals must be ear-marked if Breeding Association so requires.

Each exhibitor is limited to two entries per class and exhibitor may collect only two monies under one class number.

Young Flock: to consist of 1 ram, 1 yearling ewe, and 2 lambs.

- Weight Classes 492 and 494 will be allowed no more than 5 sub-classes each.

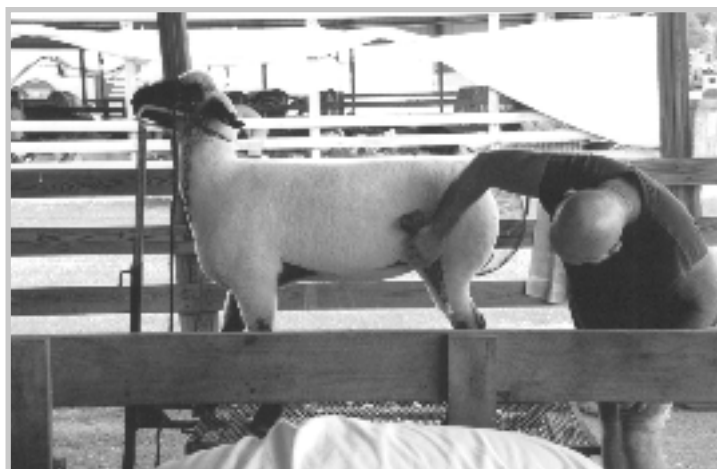
- Weight Classes 493 and 495 will be allowed no more than 2 sub-classes each.

- Market Lambs will be weighed Wednesday, August 21nd at 3:00 p.m.

- Market Lamb Classes will be divided by weight into classes by the Superintendent in charge, as they see fit.

- Market Lambs (female or male) may be grade or crossbred, and can only be shown in Market Class.

**ALL ANIMALS MUST BE CLIPPED, CUT AND GROOMED
OR PREMIUM WILL BE FORFEITED.
ALL AISLES MUST BE CLEANED AND RAKED DAILY BY 8:00 A.M.**



SECTION NO.								
1	2	3	4	5	6	7	8	9
Shropshire	Southdown	Hampshire	Cheviot	Montadle	Dorset	All Other Purebred Wool Breeds	All Other Purebred Meat Breeds	Market Lambs

CLASSES	CLASS NO.						
	1st	2nd	3rd	4th	5th		
364	380	396	412	428	444	460	476
365	381	397	413	429	445	461	477
366	382	398	414	430	446	462	478
367	383	399	415	431	447	463	479
368	384	400	416	432	448	464	480
369	385	401	417	433	449	465	481
370	386	402	418	434	450	466	482
371	387	403	419	435	451	467	483
372	388	404	420	436	452	468	484
373	389	405	421	437	453	469	485
374	390	406	422	438	454	470	486
375	391	407	423	439	455	471	487
376	392	408	424	440	456	472	488
377	393	409	425	441	457	473	489
378	394	410	426	442	458	474	490
379	395	411	427	443	459	475	491

Trophies Given By:
FIRST NATIONAL BANK OF
MANHATTAN, FARM DEPT.
WILL COUNTY FAIR ASSOCIATION

Ram, 1 year and under 2	25.00	23.00	21.00	18.00	16.00
Ram, Fall Lamb	25.00	23.00	21.00	18.00	16.00
Ram, Spring Lamb	25.00	23.00	21.00	18.00	16.00
Pair of Ram Lambs	25.00	23.00	21.00	18.00	16.00
Pair Rams - 1 Yearling & 1 Lamb	25.00	23.00	21.00	18.00	16.00
Champion Ram		\$15.00 - Rosette			
Reserve Champion Ram		\$10.00 - Rosette			
Ewe, 1 year and under 2	25.00	23.00	21.00	18.00	16.00
Ewe, Fall Lamb	25.00	23.00	21.00	18.00	16.00
Ewe, Spring Lamb	25.00	23.00	21.00	18.00	16.00
Pair of Ewe Lambs	25.00	23.00	21.00	18.00	16.00
Pair of Ewes - 1 Yearling & 1 Lamb	25.00	23.00	21.00	18.00	16.00
Pair of Lambs - 1 Ewe and 1 Ram Lamb	25.00	23.00	21.00	18.00	16.00
Champion Ewe		\$15.00 - Rosette			
Reserve Champion Ewe		\$10.00 - Rosette			
Young Flock	25.00	23.00	21.00	18.00	16.00
Single Market Lamb - Wether	25.00	23.00	21.00	18.00	16.00
Pen of 2 Market Lambs - Wether	25.00	23.00	21.00	18.00	16.00
Single Market Lamb - Ewe	25.00	23.00	21.00	18.00	16.00
Pen of 2 Market Lambs - Ewe	25.00	23.00	21.00	18.00	16.00

SPECIAL AWARDS - No Entry Number Required ..

526 Grand Champion Ram Over All Breeds	\$20.00 - Rosette & Trophy
527 Reserve Champion Ram Over All Breeds	\$15.00 - Rosette
528 Grand Champion Ewe Over All Breeds	\$20.00 - Rosette - Trophy
529 Reserve Champion Ewe Over All Breeds	\$15.00 - Rosette
530 Grand Champion Market Lamb	\$20.00 - Rosette & Trophy
531 Reserve Grand Champion Market Lamb	\$15.00 - Rosette
532 Grand Champion Pen of Market Lambs	\$20.00 - Rosette & Trophy
533 Reserve Champion Pen of Market Lambs	\$15.00 - Rosette

DEPARTMENT F

OPEN CLASS SHEEP

