



DEPARTMENT B  
**DAIRY CATTLE**



**JAMES MEYER, Superintendent**  
 (815) 258-9573  
**MELVIN MEYER, Assistant Superintendents**

**Entries Close Monday, August 5, 2019 - 5:00 p.m. Estimated Amount Offered \$19,740.00**

Judging time - 9:00 a.m. Friday, August 23, 2019  
 Entry Fee - \$10.00 per entry Stall Rent - \$5.00 per head for duration of Fair

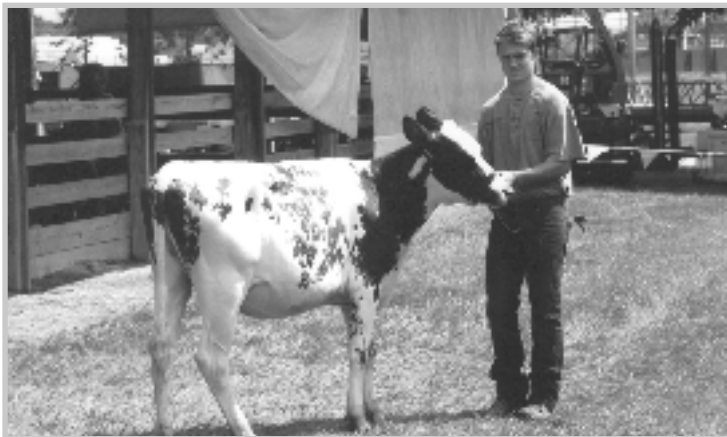
**Entry and Stall Fee must be paid at time entry is made.**

1. **Registration papers are required for all purebred livestock and must be made available for inspection by Directors in charge and remain in exhibitors possession for duration of fair.**
2. Health Rules: See 2019 State Exhibition Livestock Health Requirements.
3. All animals must be earmarked if Breeding Association so requires.
4. Registered Red and White Holsteins are eligible to show.
5. All dry cows must show in dry cow classes.
6. Due to sanitary conditions, NO MILK will be dumped on the ground.
7. Each exhibitor is limited to two entries per class number and may collect only two monies under one class number.

**CLASSES DEFINED**

Spring Heifer Calf .....	Born after 3-1-19 thru 6-1-19
Winter Heifer Calf .....	Born after 12-1-18 thru 2-28-19
Fall Heifer Calf .....	Born 9-1-18 thru 11-30-18
Summer Yearling .....	Born 6-1-18 thru 8-31-18
Spring Yearling .....	Born 3-1-18 thru 5-31-18
Winter Yearling .....	Born 12-1-17 thru 2-28-18
Fall Yearling .....	Born 9-1-17 thru 11-30-17
2 yr. old Cow .....	Born 3-1-16 thru 2-28-17
3 & 4 yr. old Cow .....	Born 9-1-15 thru 8-31-16
Aged Cow .....	Born before 9-1-15

*Trophies Donated by Heritage FS and Will County Fair*



SECTION NO.					
1	2	3	4	5	
Ayrshire	Guernsey	Holstein (B-W & R-W)	Brown Swiss	Jersey	Milking Shorthorn
Class No.					
165	184	203	222	241	260
166	185	204	223	242	261
167	186	205	224	243	262
168	187	206	225	244	263
169	188	207	226	245	264
170	189	208	227	246	265
171	190	209	228	247	266
172	191	210	229	248	267
173	192	211	230	249	268
174	193	212	231	250	269
175	194	213	232	251	270
176	195	214	233	252	271
177	196	215	234	253	272
178	197	216	235	254	273
179	198	217	236	255	274

# DEPT. B OPEN CLASS DAIRY CATTLE



### CLASSES

	1st	2nd	3rd	4th	5th	6th
Spring Heifer Calf	50.00	48.00	46.00	44.00	42.00	40.00
Winter Heifer Calf	50.00	48.00	46.00	44.00	42.00	40.00
Fall Heifer Calf	50.00	48.00	46.00	44.00	42.00	40.00
Summer Yearling	50.00	48.00	46.00	44.00	42.00	40.00
Spring Yearling	50.00	48.00	46.00	44.00	42.00	40.00
Winter Yearling	50.00	48.00	46.00	44.00	42.00	40.00
Fall Yearling	50.00	48.00	46.00	44.00	42.00	40.00
Jr. Champion Female	\$15.00 - Rosette					
2 year old Cow	50.00	48.00	46.00	44.00	42.00	40.00
3 & 4 year old Cow	50.00	48.00	46.00	44.00	42.00	40.00
Aged Cow	50.00	48.00	46.00	44.00	42.00	40.00
Dry Cow 3 year old & over	50.00	48.00	46.00	44.00	42.00	40.00
Sr. Champion Female	\$15.00 - Rosette					
Grand Champion Female each breed	\$20.00 - Rosette					
Best Udder	50.00	48.00	46.00	44.00	42.00	40.00

### SPECIAL AWARD - No Entry Number Required

Grand Champion Cow over all breeds

Trophy by Heritage F.S.